

---

Figure 1: Old Crossroads: Figure Ground

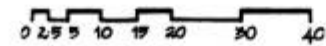
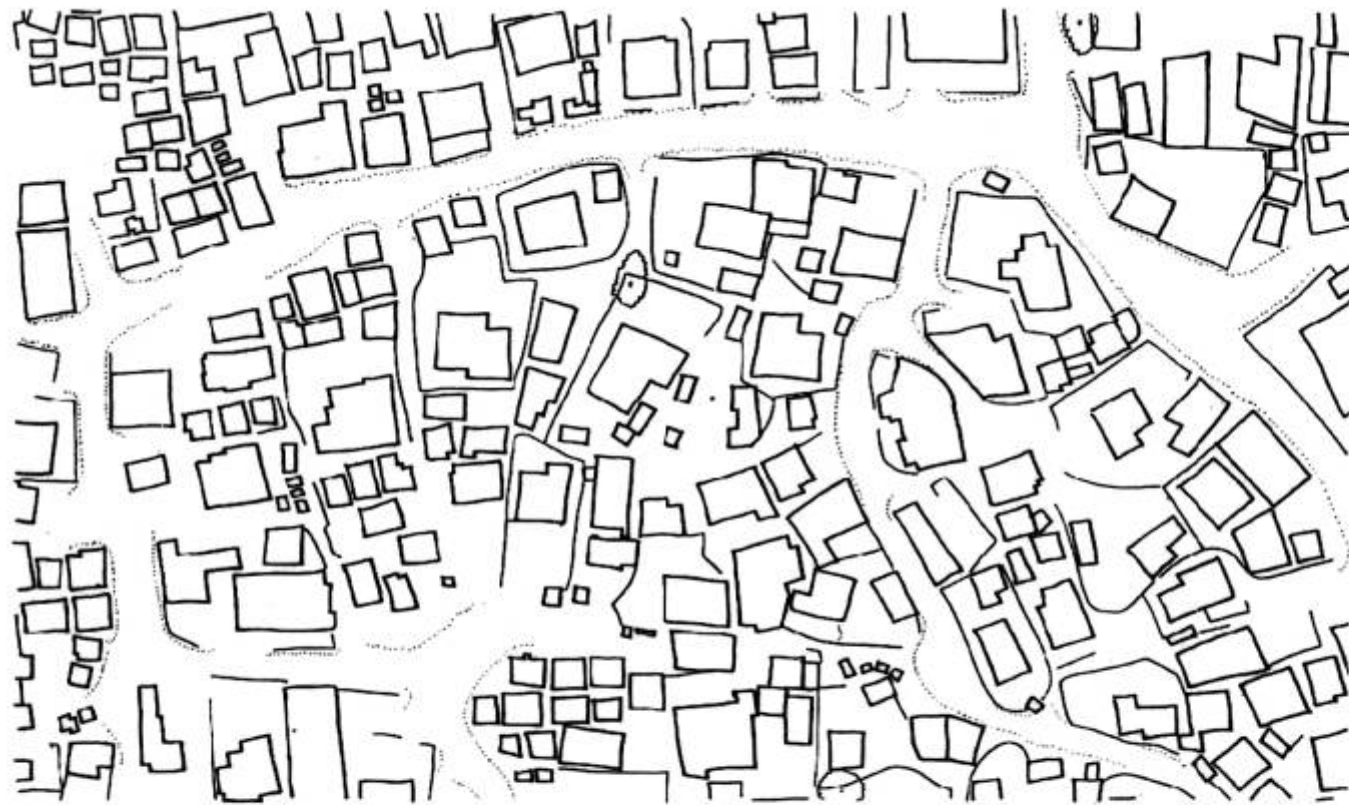


Figure 2: Old Crossroads: Representative Area

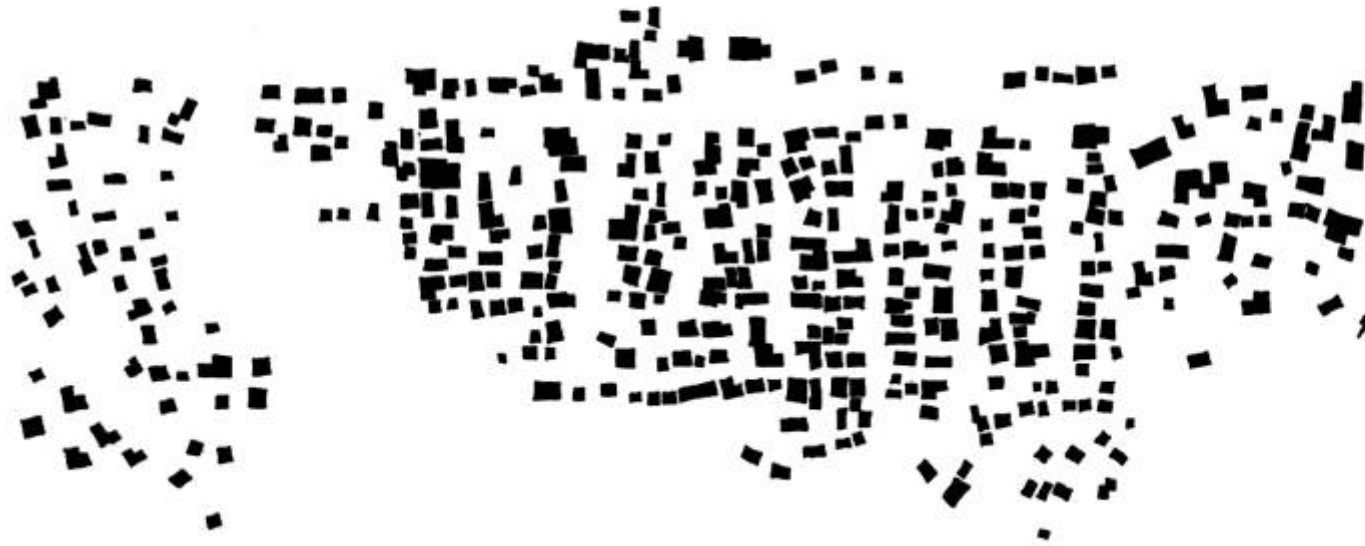


Figure 3: Site 5 – Noordhoek: Figure Ground



Figure 4: Site 5 – Noordhoek: Representative Area

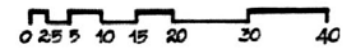


Figure 5: Waterworks – Grabouw: Figure Ground

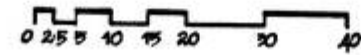
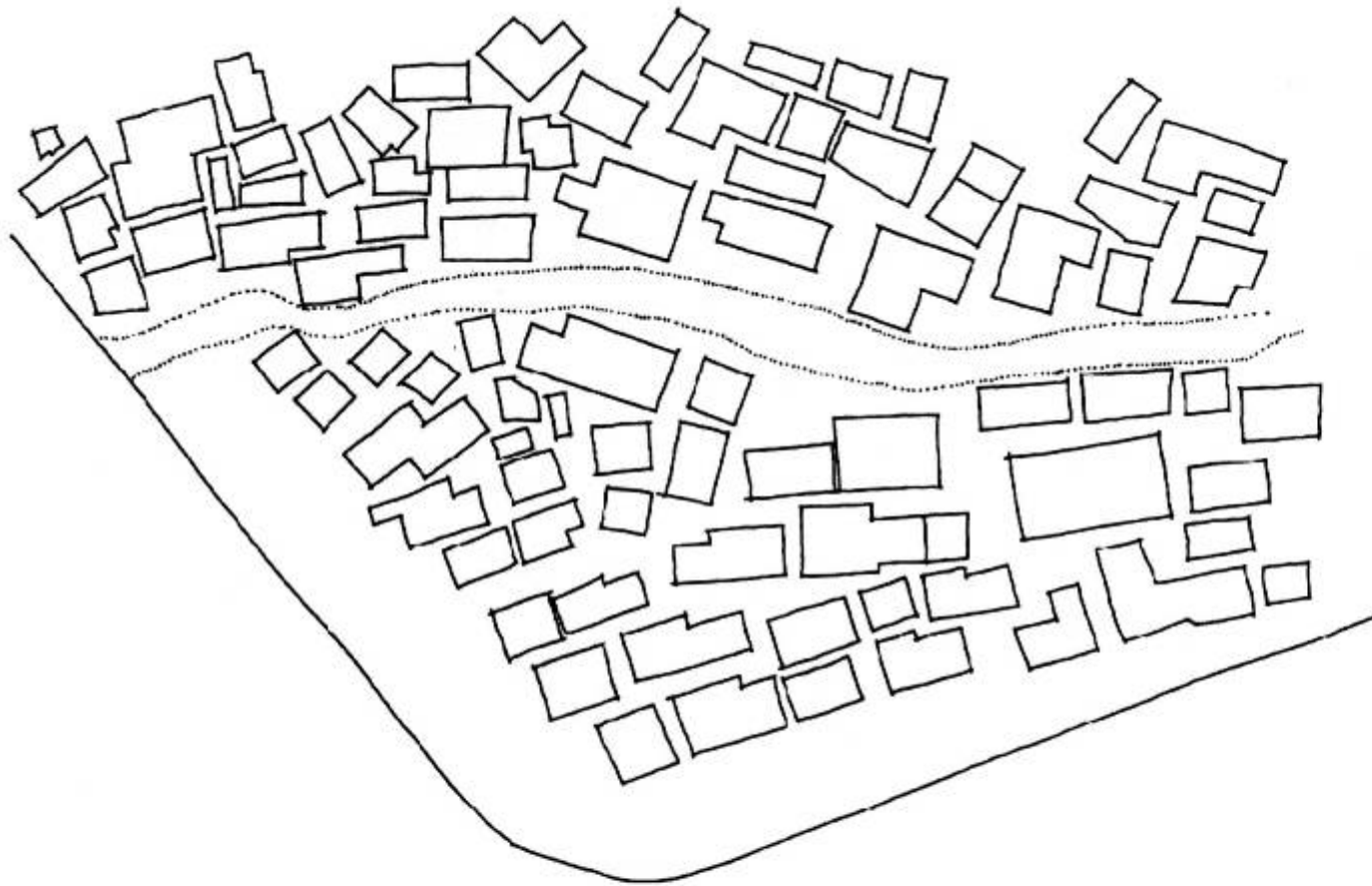
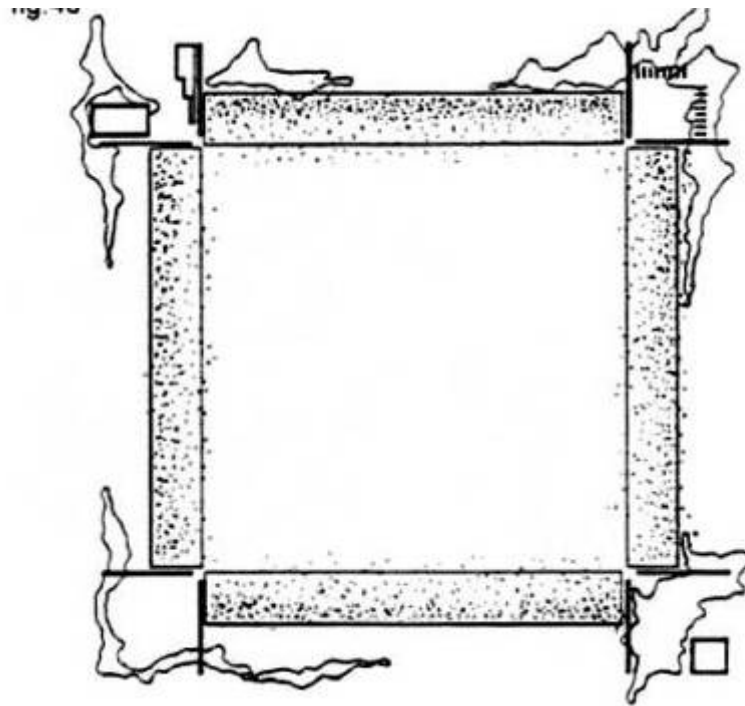
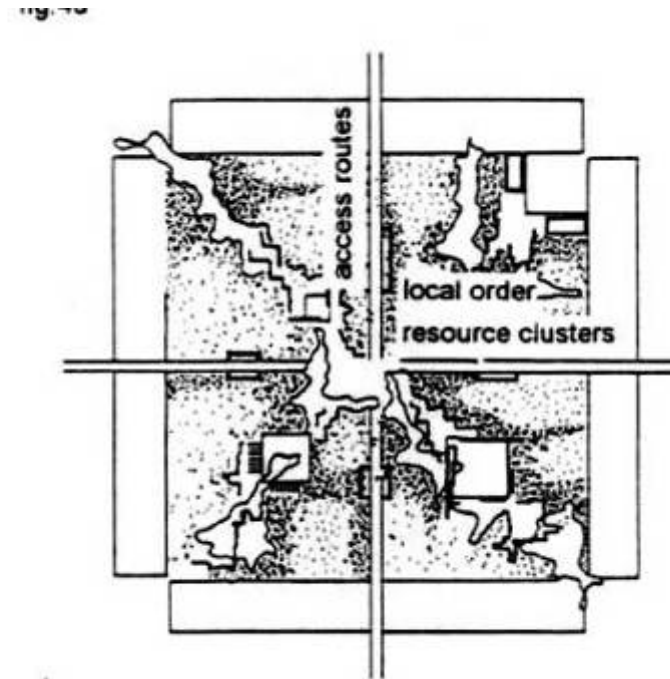


Figure 6: Waterworks – Grabouw: Representative Area



i) Primary spatial structures relate to strategic areas or places of gathering. Public resources are clustered at places of high convenience. External clusters may relate to general community needs such as transport areas and markets.



ii) Within the community area primary public structures related to Primary access and circulation routes and firebreaks. Green structures relate to places for agricultural activity and recreation. Facilities are clustered in relation to the access and green structures.

Figure 7a & b: Primary Structure – Primary Organizational Principles: Working with Informality: Resource Clusters

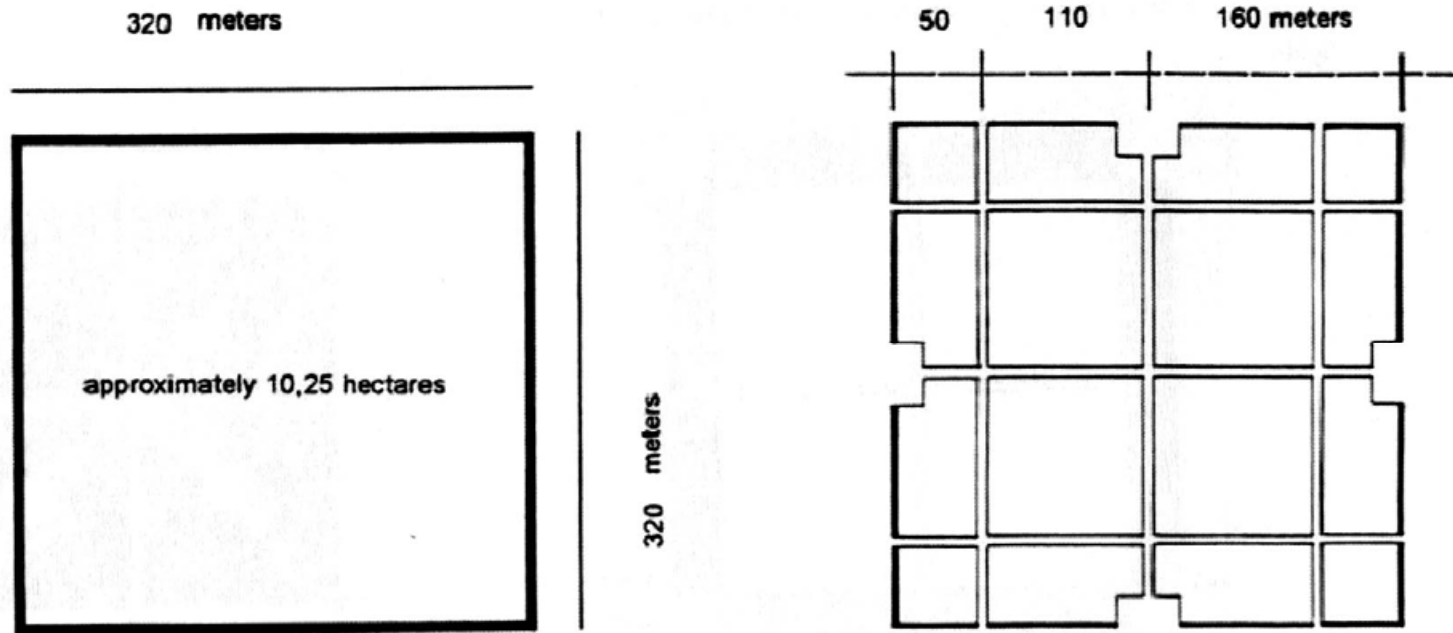
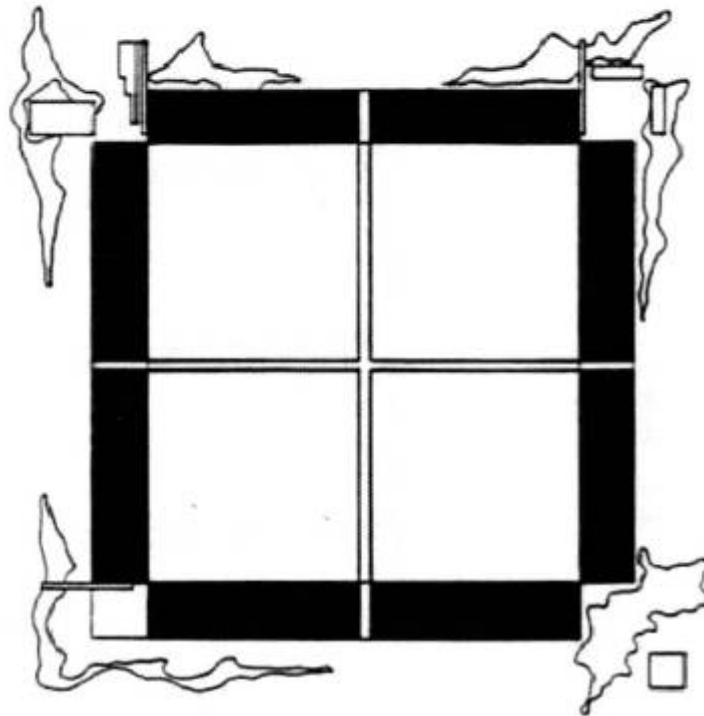


Figure 8a-b: Scale – Basic Principles of Scale: Working with Informality

Highly exposed external edges  
Prime location for general facilities and resources



i) Spaza shops, markets and general facilities are associated with external public space.



ii) Bathhouses, laundries, waterpoints, public ablutions and refuse collection points are associated with internal public networks

Figure 9a-b: Urban Integration – Opportunities for Investment of Public and Private Resources

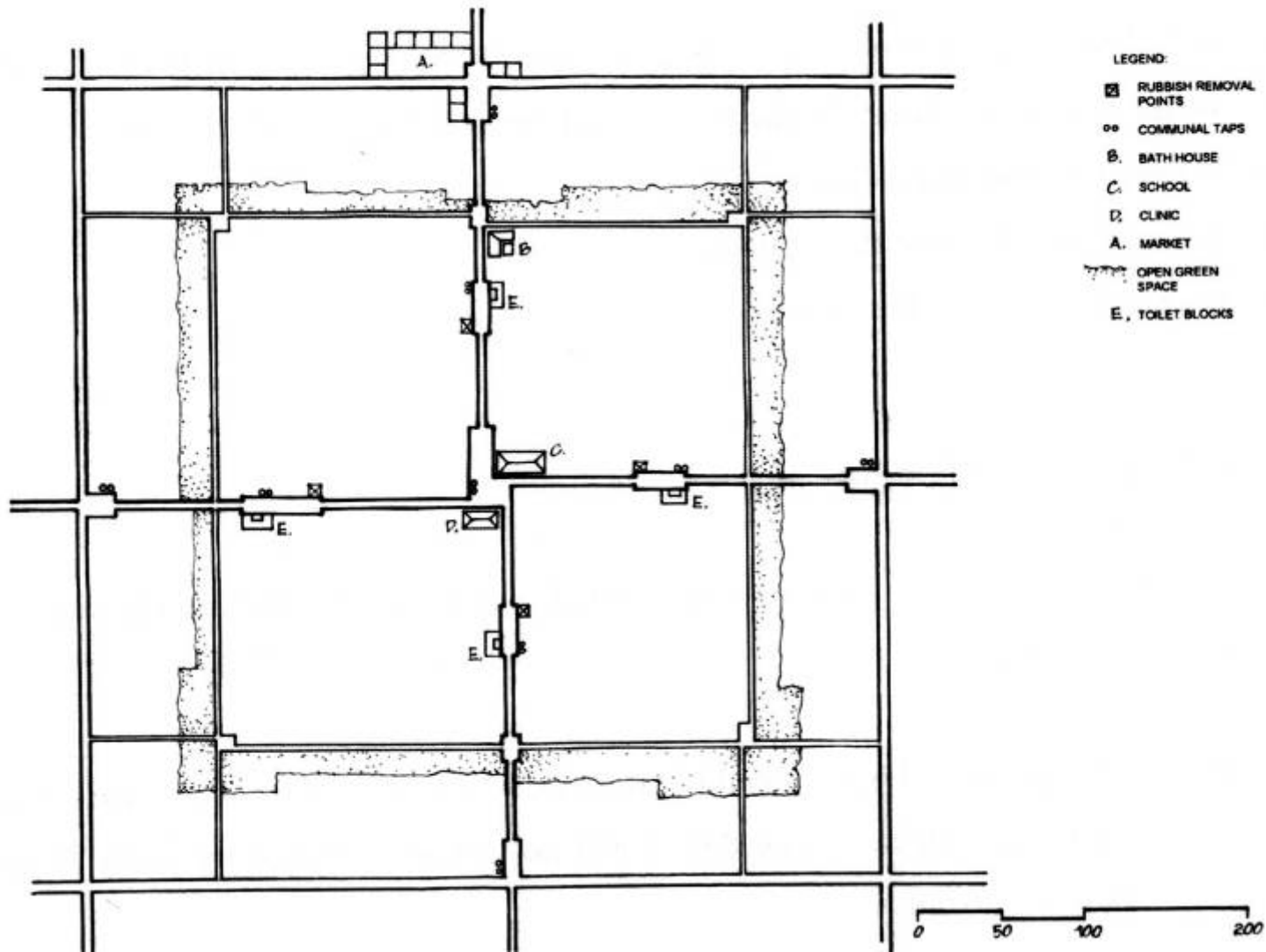


Figure 10: A Conceptual Synthesis

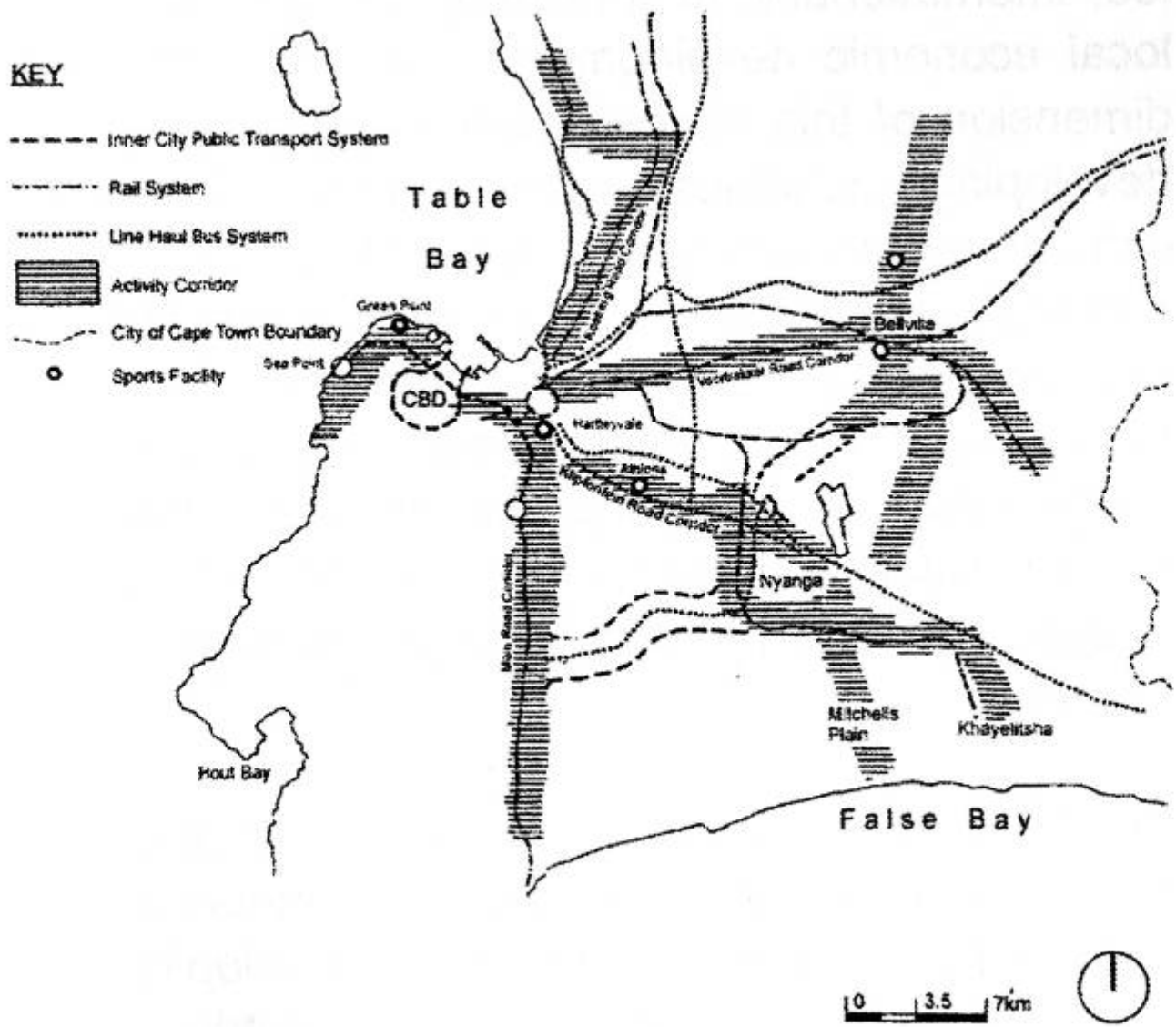


Figure 11: Metropolitan Concept

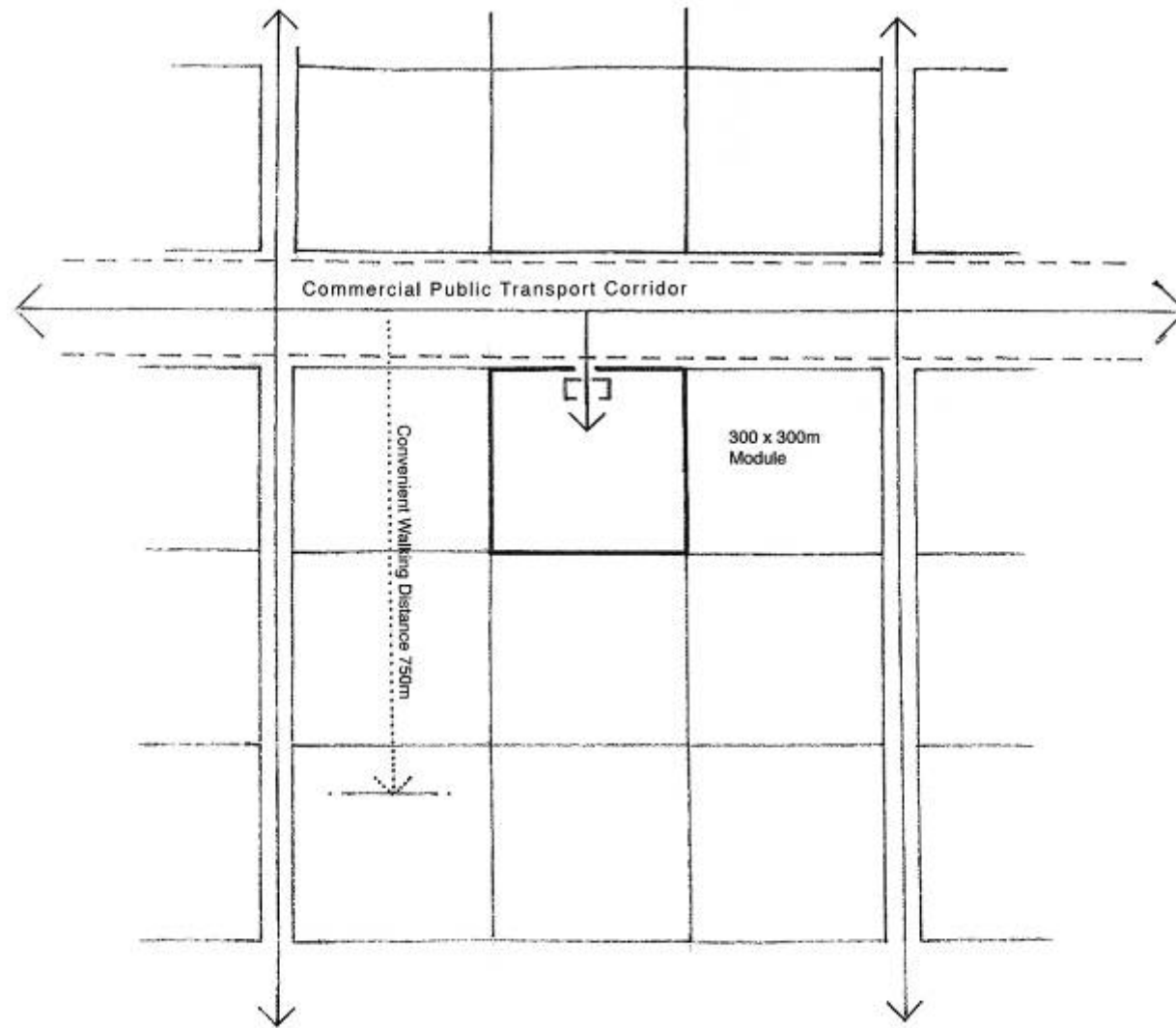


Figure 12: Urban Corridor Context – Superblock and System of Modules

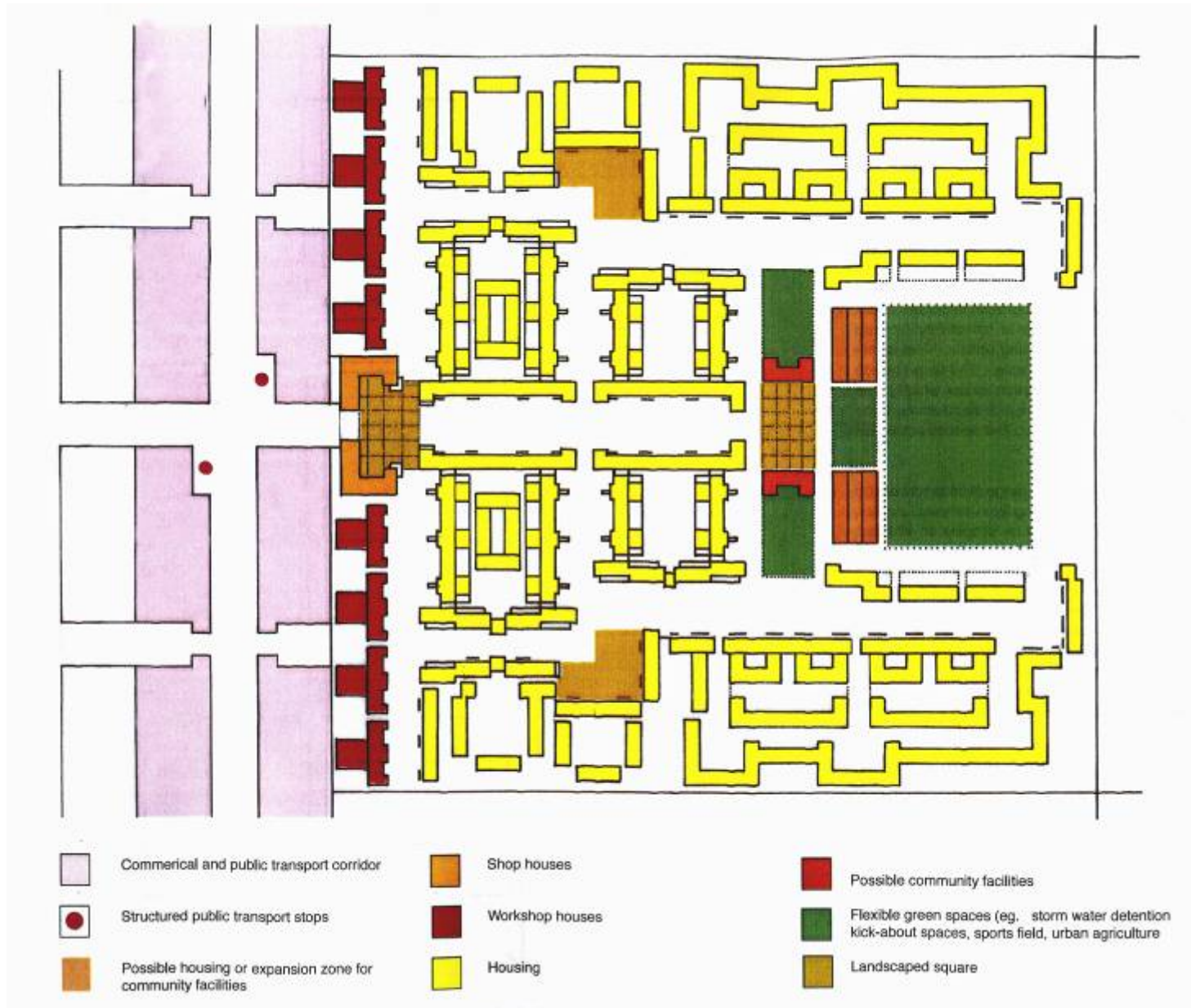


Figure 13: Elements of the Public Structure

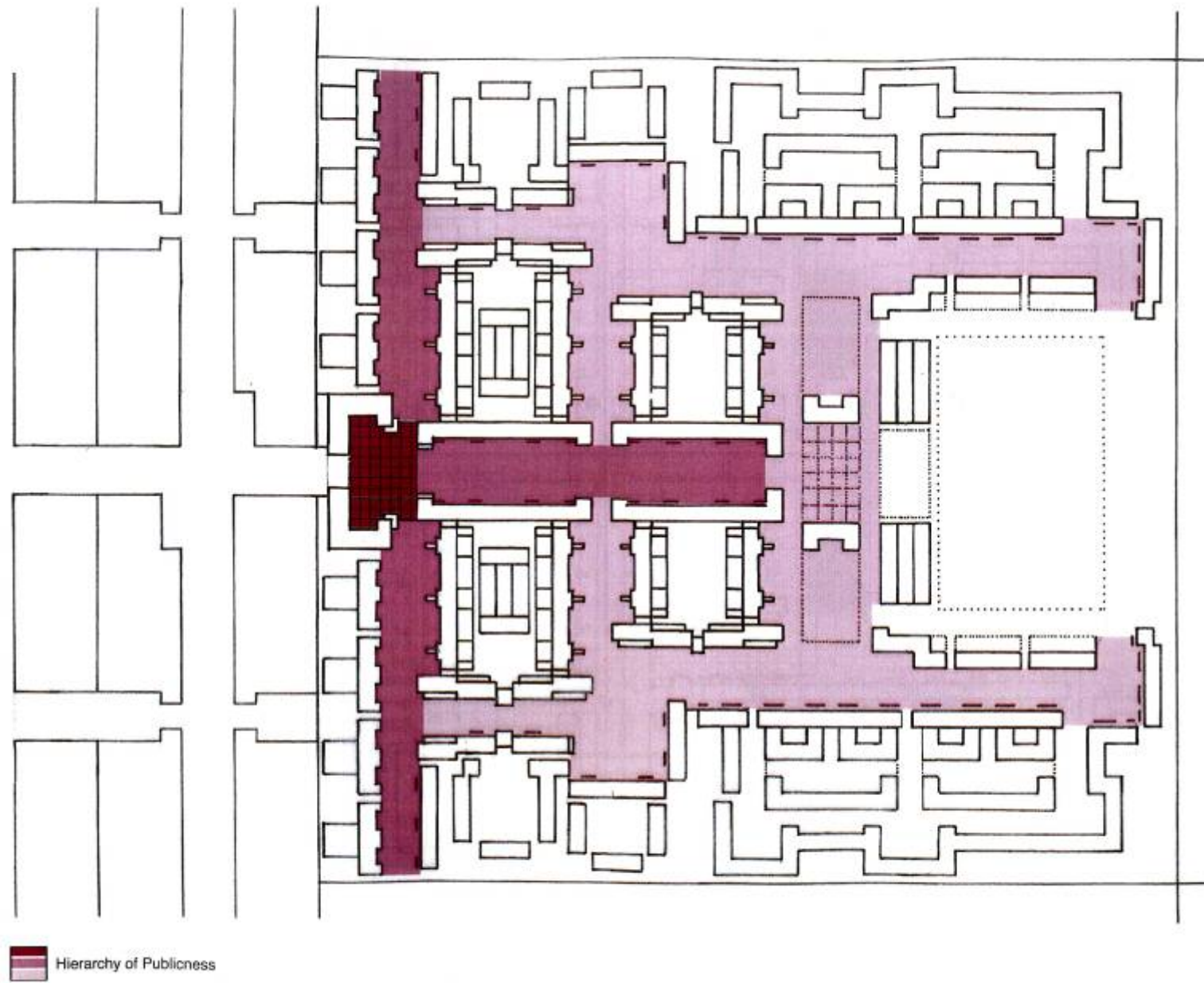


Figure 14: Hierarchy of Publicness

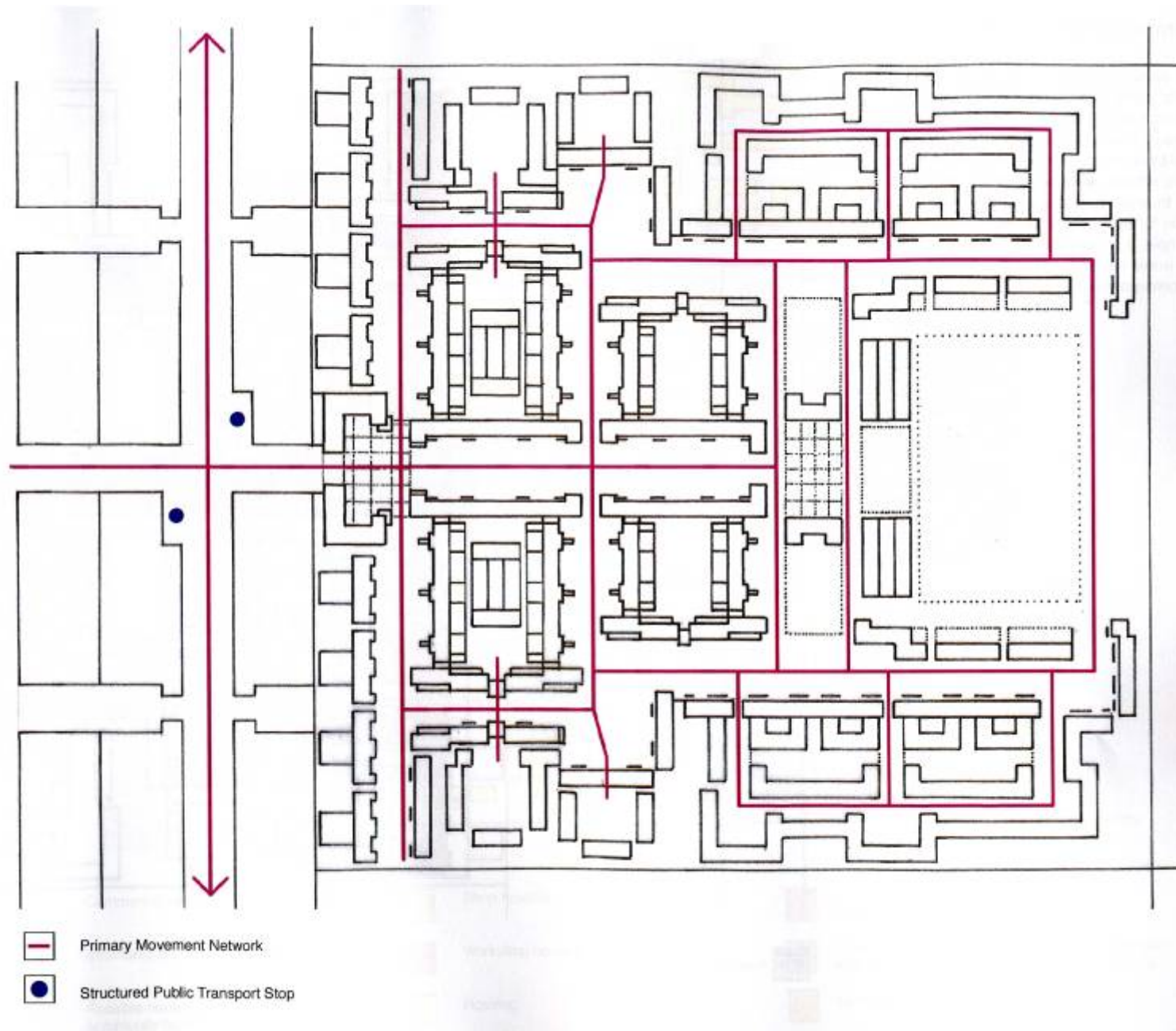


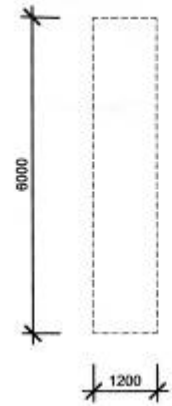
Figure 15: Primary Movement Network



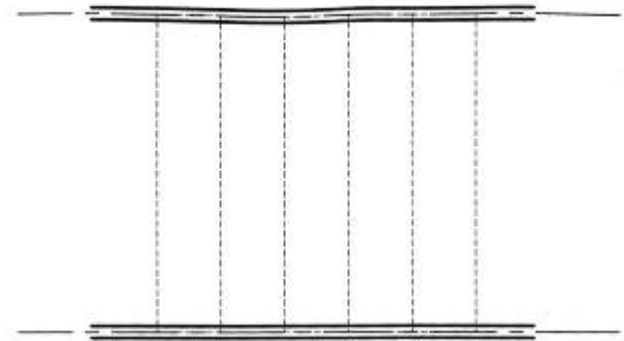
Figure 16: Height



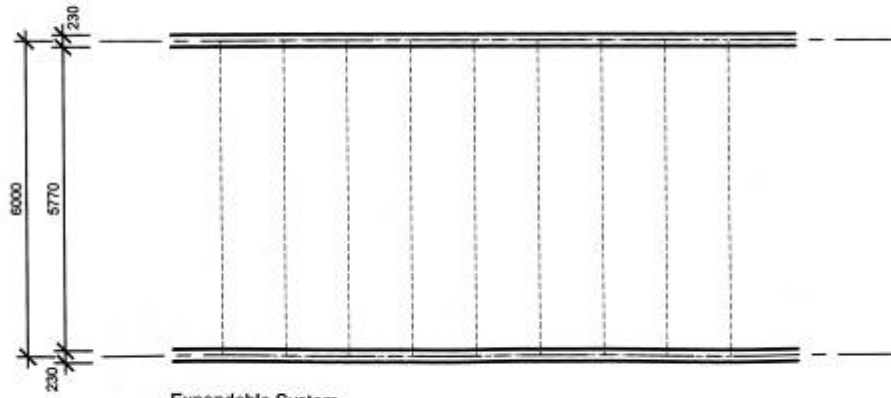
Figure 17: Housing Types



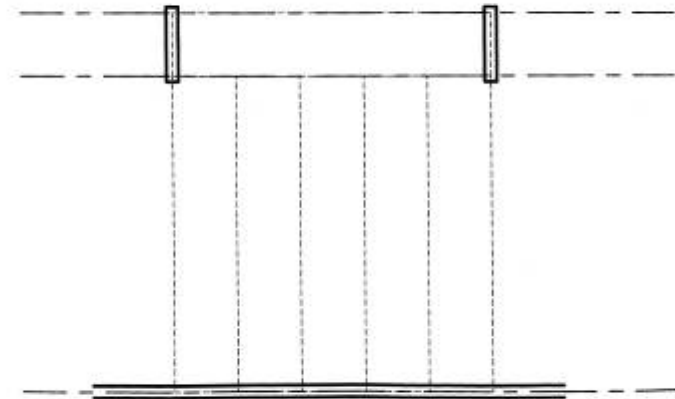
Basic Building Unit: The Standard Concrete Plank



Flexibility within Structural Walls



Expandable System



Adaptability within Structural System

Figure 60: The Plank System

Scale 1 : 100



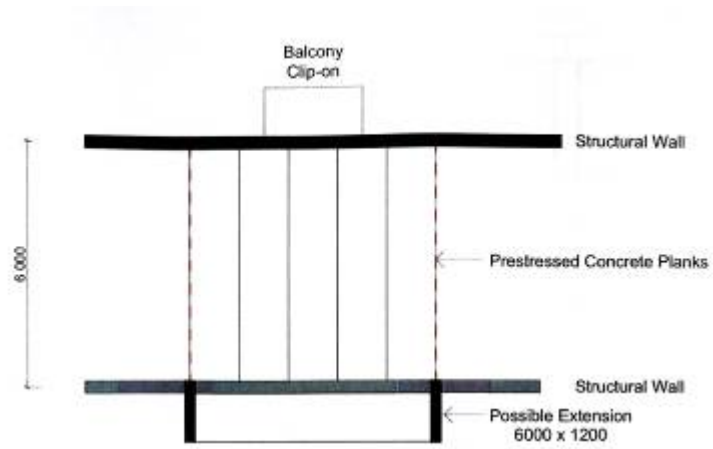


Figure 61: Structural Outline

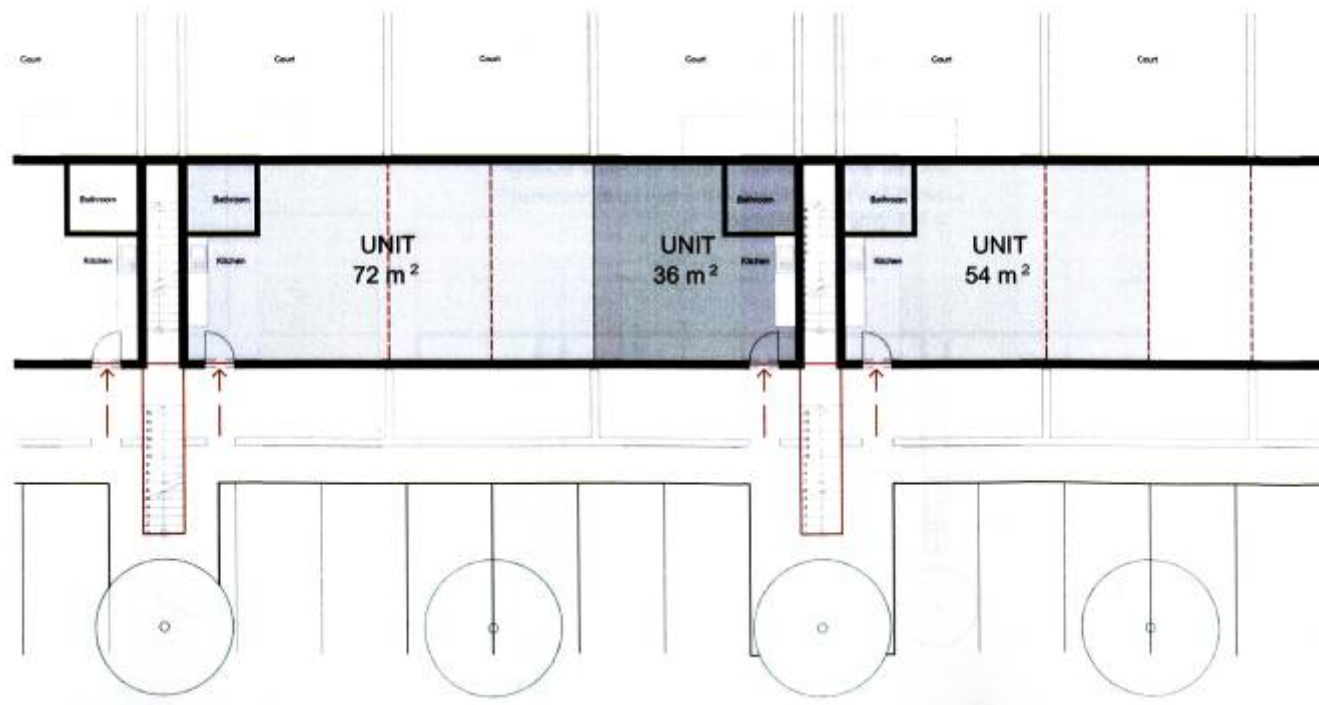


Figure 19: Core Rhythm and Flexibility of Spaces

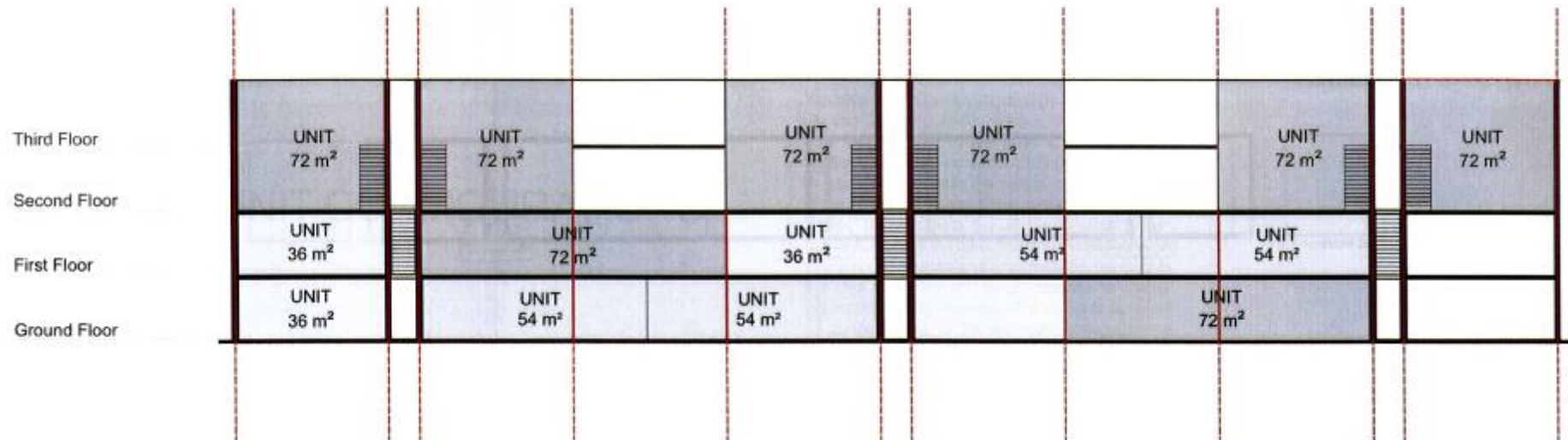


Figure 20: Floor Configuration of Four Storey Walk-up: Sectional Elevation

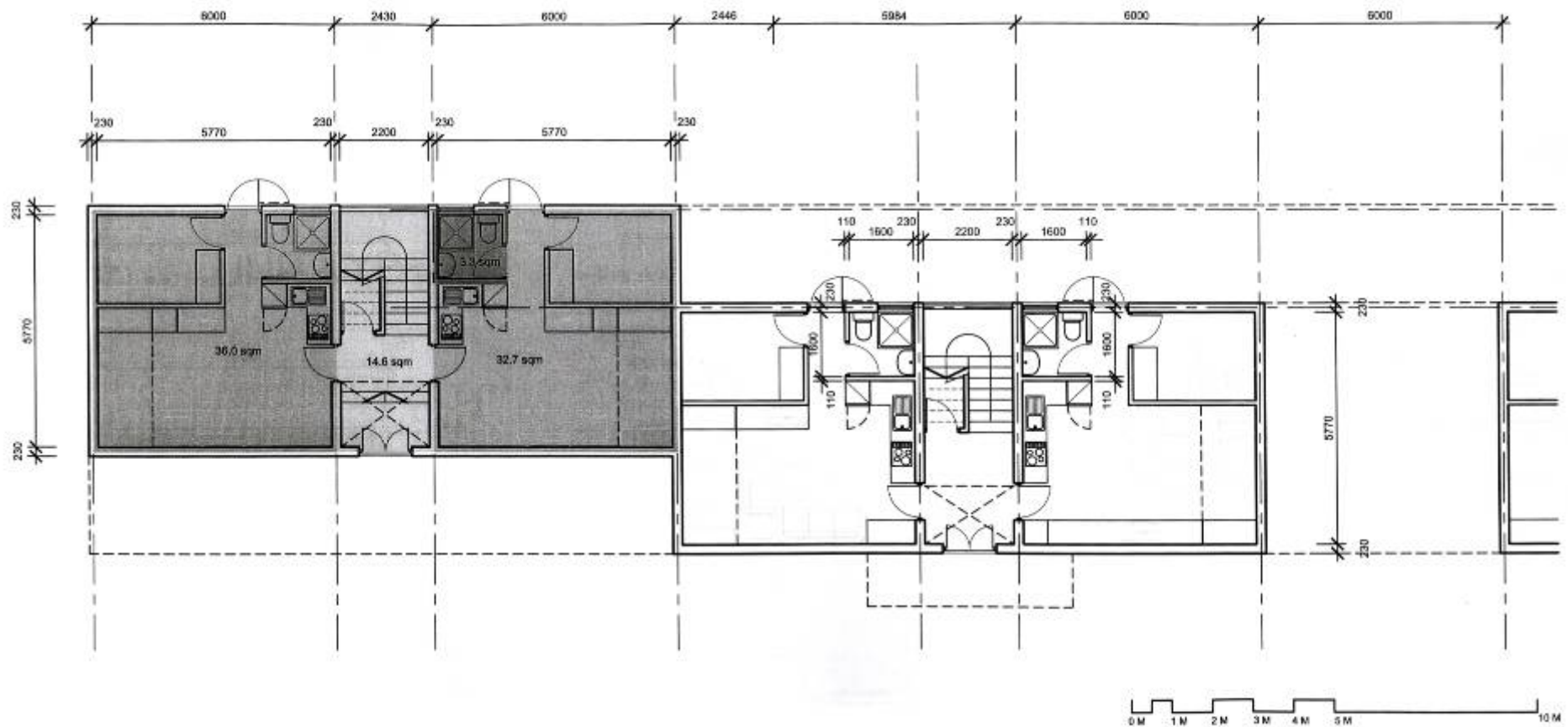
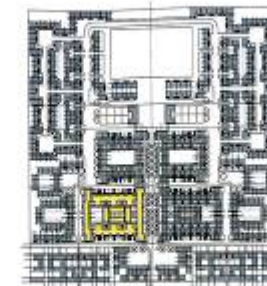
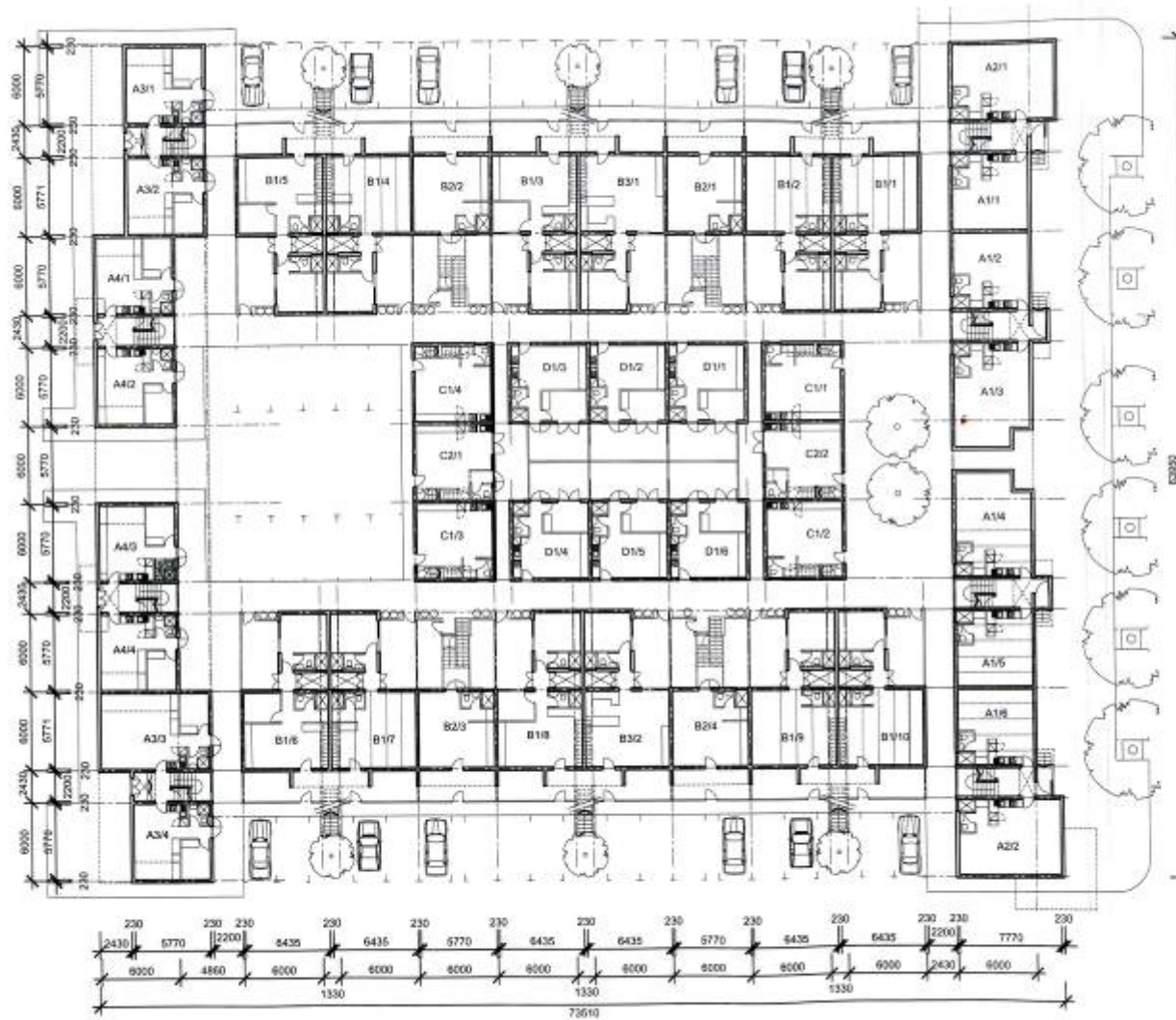


Figure 21: Simplex on Simplex on Simplex (Hierarchy Class B) Ground Floor Plan 24.



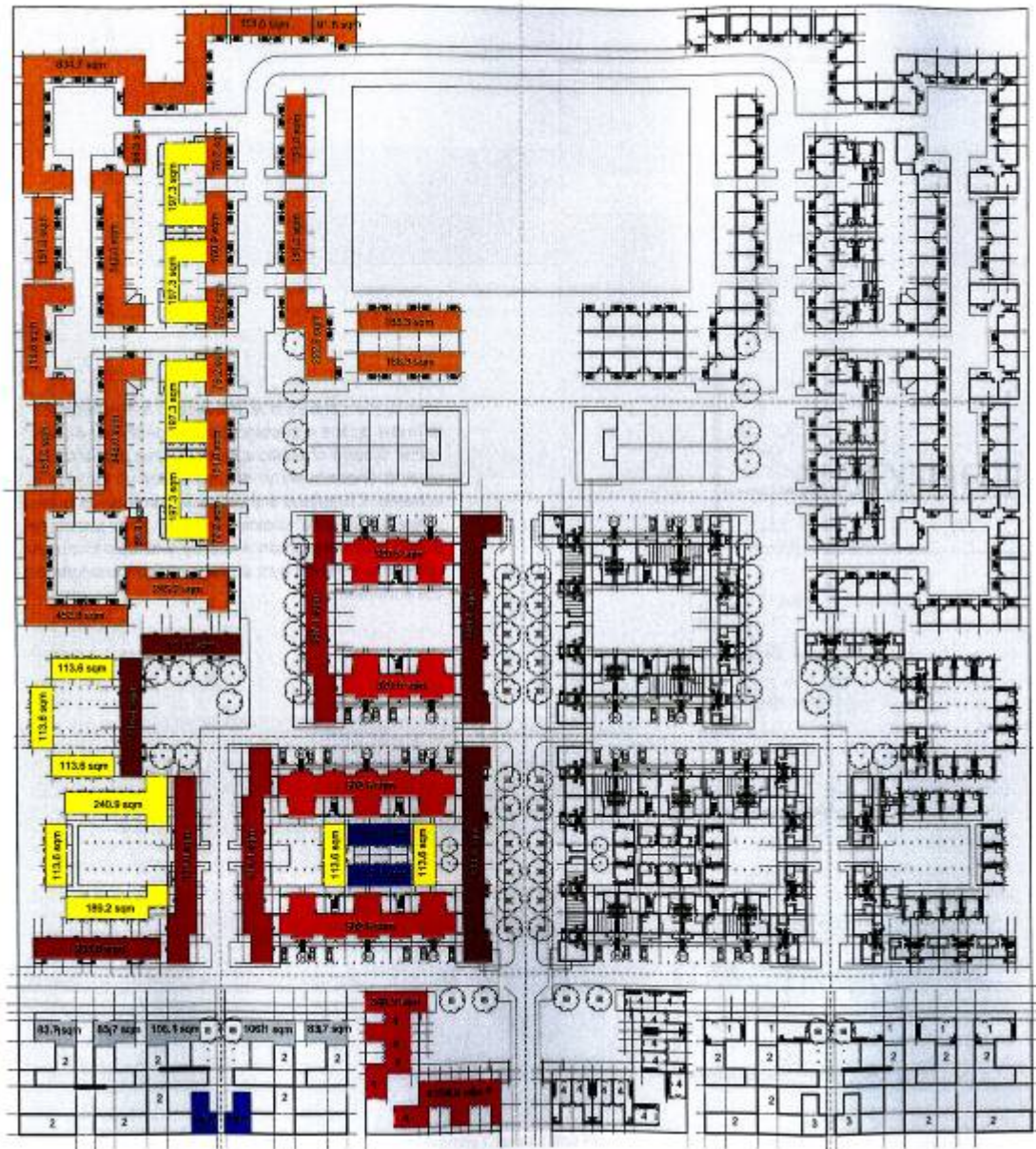
Key Locating Plan

**INFILL COURT: GROUND FLOOR UNIT COUNT & AREAS (excl. balconies)**

UNIT TYPE	SHEET REF. NO.	UNIT COUNT	UNIT AREA LESS BATHRM (m <sup>2</sup> )	UNIT BATHRM AREA (m <sup>2</sup> )	TOTAL AREA PER UNIT (m <sup>2</sup> )	TOTAL GND. FL. AREA ALL UNITS (m <sup>2</sup> )
Simplex on simplex on simplex	A1	6	32.7	3.3	36.0	216.0
	A2	2	44.1	3.9	48.0	96.0
Simplex on simplex on simplex	A3	4	32.7	3.3	36.0	144.0
	A4	4	32.7	3.3	36.0	144.0
Duplex on simplex on simplex	B1	10	59.8	7.8	67.6	586.0
	B2	4	32.1	3.9	36.0	144.0
	B3	2	54.7	3.9	58.6	117.2
Duplex	C1	4	Gnd: 33.5	2.5	72.0	134.0
		1st. Fl.				
	C2	2	Gnd: 65.5	2.6	72.0	144.0
			1st. Fl.			
Simplex	D1	6	32.1	3.9	36.0	216.0
<b>TOTAL UNITS</b>		<b>44</b>			<b>TOTAL GND. FL. AREA (m<sup>2</sup>) excl. Bal.</b>	<b>1941.2</b>



Figure 22: Block Types and Hierarchy: Infill Court (Hierarchy Class A): Ground Floor



**SUPERBLOCK: Housing Types & Related Building Footprint Areas**

HOUSING TYPE	AREA: INDIVIDUAL HOUSING TYPES FOOTPRINT (m <sup>2</sup> )	HOUSING TYPE COUNT	AREA: SUM HOUSING TYPE FOOTPRINT BY COUNT (m <sup>2</sup> )
Simplex on simplex on simplex	433.6	2	867.3
	449.4	2	898.7
	216.6	2	437.2
	181.2	2	362.5
Duplex on duplex on duplex	414.1	2.0	828.2
	387.1	2.0	774.1
	361.0	2.0	722.1
Duplex on duplex	233.8	2.0	467.5
	502.6	4.0	2010.3
Duplex on duplex on duplex	320.6	4.0	1282.3
	-	-	-
Duplex on duplex	-	-	9411.0
Duplex	-	-	3801.8
Simplex on simplex on Workshop space	-	-	926.6
Simplex on duplex on duplex	-	-	1277.0
Duplex	113.8	4	454.4
<b>TOTAL</b>			<b>23951.1</b>

**SUPERBLOCK: GROUND FLOOR UNIT COUNT & AREAS (excl. balconies)**

HOUSING TYPE	UNIT TYPE: CLASSIFIED BY TOTAL AREA PER UNIT (m <sup>2</sup> )	GROUND FLOOR UNIT COUNT	SUM TOTAL GND. FL. AREA ALL UNITS (m <sup>2</sup> )
Simplex on simplex on simplex on simplex	36.0	44	1584
	48.0	6	288
Duplex on duplex on duplex on duplex	38.0	48	1764
	58.6	40	2344
Duplex on duplex	36.0	12	432
	36.0	196	7056
	45.4	6	363
	51.0	12	612
	54.0	2	108
Duplex on duplex on duplex	54.8	8	438
	57.2	4	229
	-	-	-
Duplex	72.0	96	6912
	-	-	Grnd Fl: 3528 1st Fl: excluded
Simplex on simplex on Workshop space	34.0	6	504
	105.0	4	424
Simplex on duplex on duplex on duplex	45.0	4	180
	57.0	4	228
Duplex	61.0	14	854
	38.0	12	432
Duplex	75.5	4	306
	-	-	-
<b>TOTAL</b>		<b>523</b>	<b>21368</b>

Note: Development Module overall site area approx. 9.6 Ha

Simplex on simplex on workshop Space  
Key

- 1. Mixed Use Use
- 2. Workshop
- 3. Living Unit

Simplex on simplex on Shop Space  
Key

- 4. Mixed Use Use



Figure 23: Typical 300m x 300m Development Module: Ground Floor

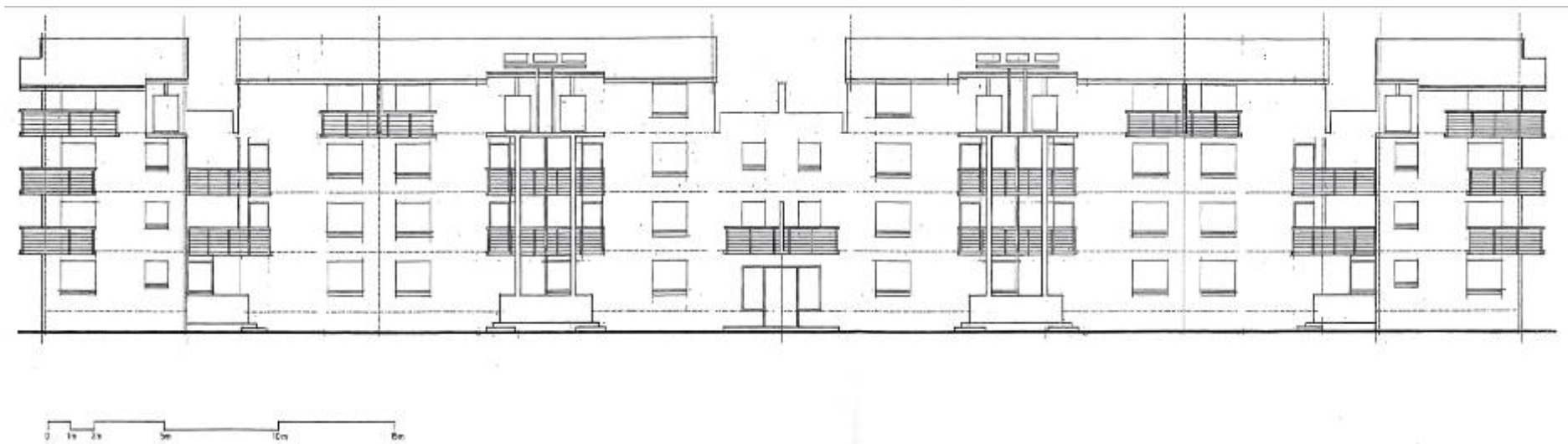


Figure 24: Typical Elevation Reflecting Intended Character

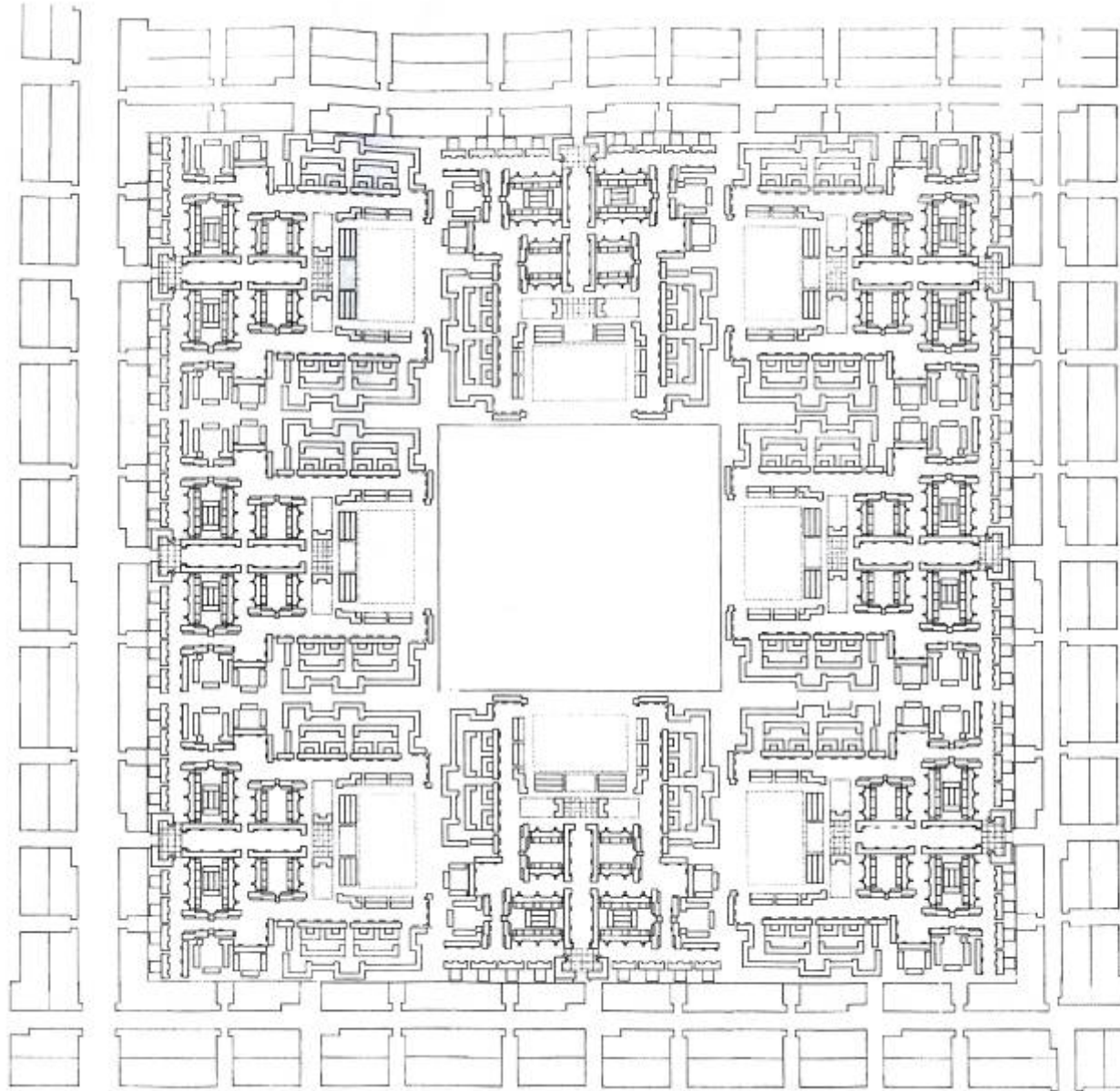


Figure 25: Returning to the Whole: 9 Superblocks

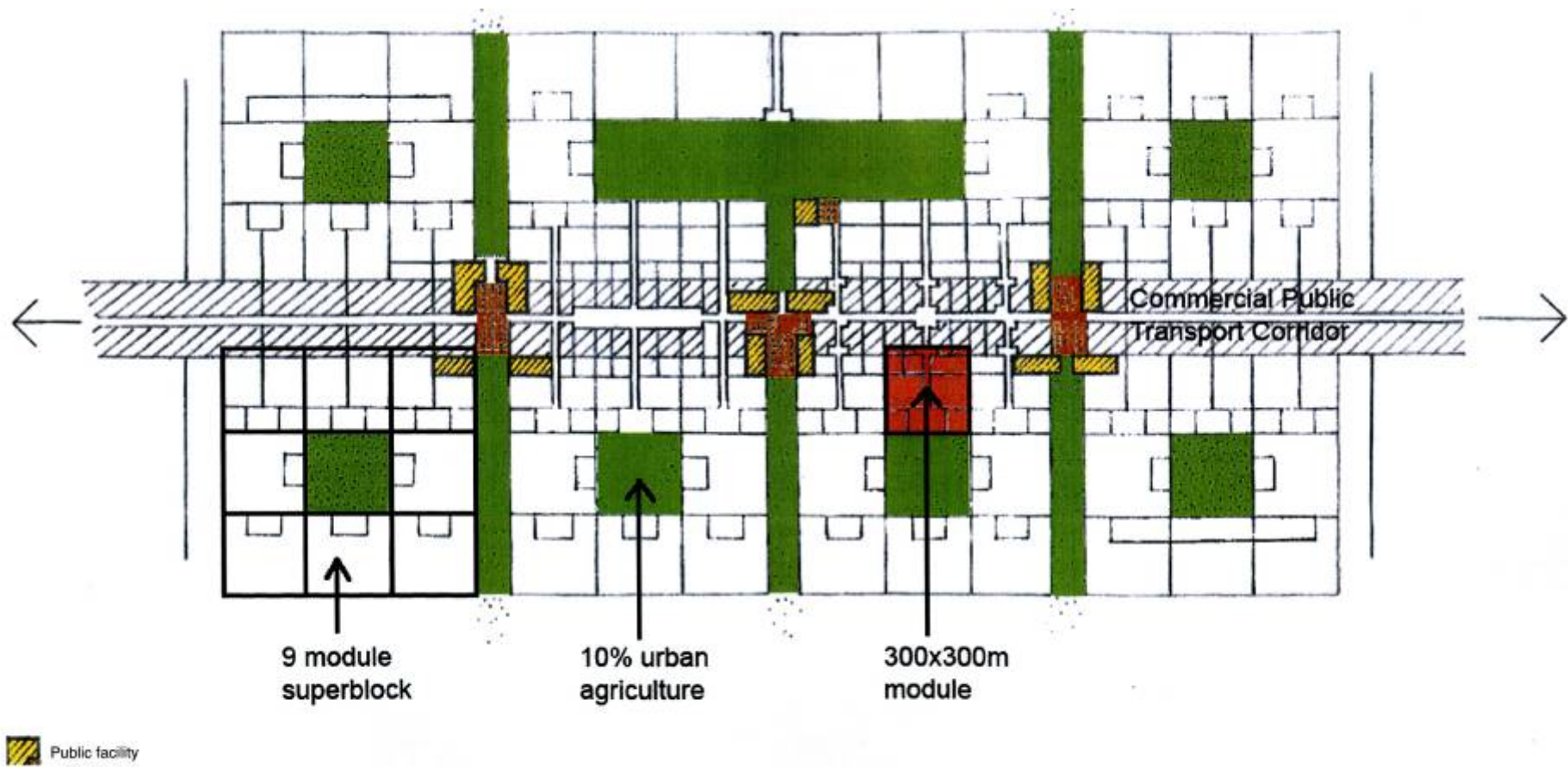


Figure 26: The Concept in the Context of the Corridor